

Configuring Workstations for the A+nyWhere Learning System® Browser Software

American Education Corporation Customer Support Team



The American Education Corporation
7506 N. Broadway Ext.
Oklahoma City, OK 73116

In order for the *A+nyWhere Learning System*[®](*A+LS*ⁱ) software to run properly on your computer . your Internet browser, proxy server, and content filter must be configured appropriately.

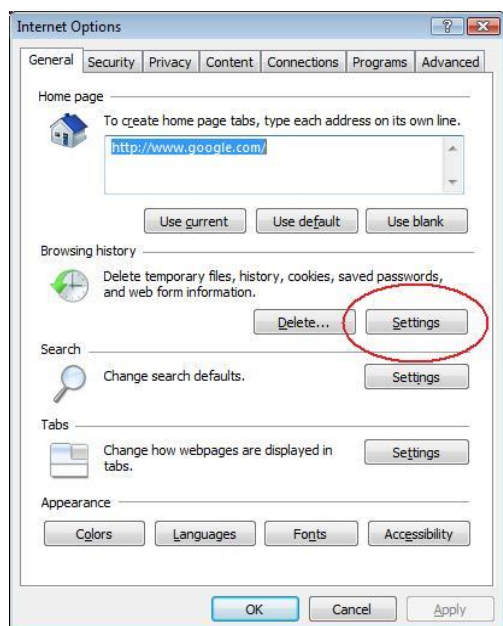
Many schools limit the network rights of students and teachers so that changing Internet browser settings is not possible, or they use software that prevents changes from being made permanently. We **highly recommend** that a school's Network Administrator or IT staff make the following adjustments permanent so that these settings will always be in effect whenever a Teacher, Student or Administrator logs on to the workstation.

Caching, Privacy and Security Settings

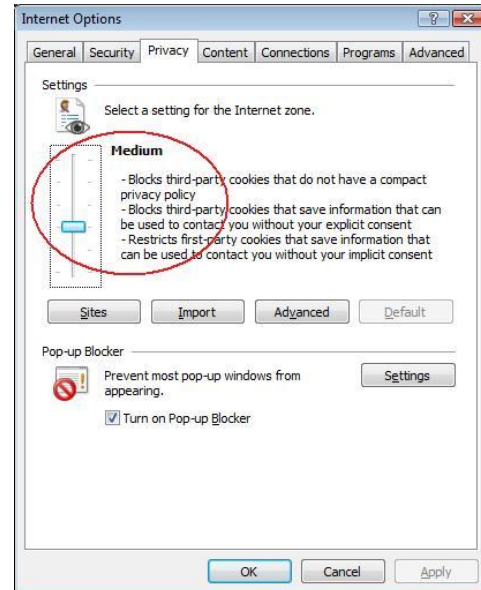
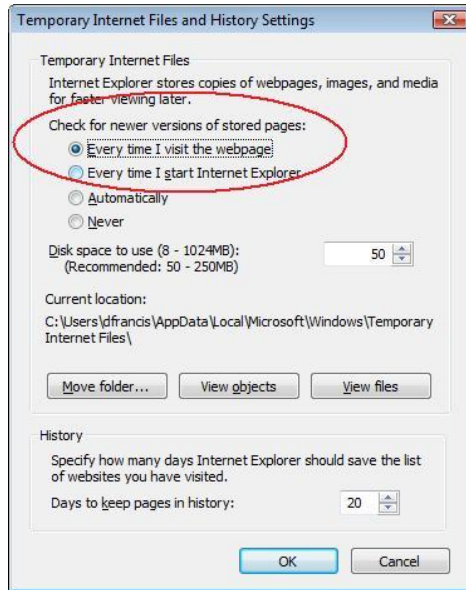
Internet Explorer must be set **not** to cache (save) *A+LS* web pages on the workstation. Also, the Internet Explorer Privacy setting **must** be set to Medium privacy, and the Security settings **must** allow Javascript.

Please follow the steps below to properly configure Internet Explorer 7.0 settings for each workstation.

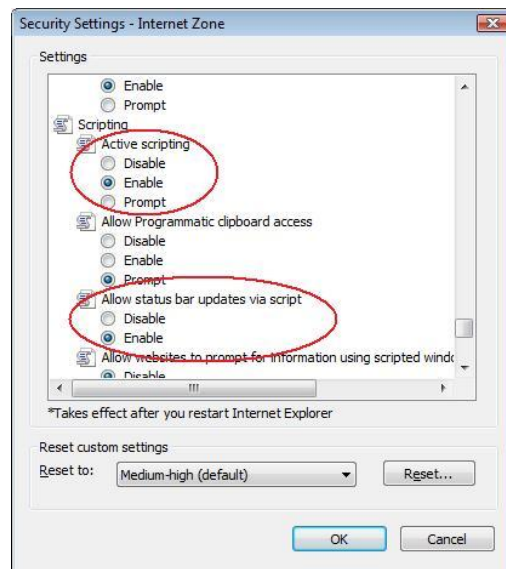
1. Launch Internet Explorer.
2. From the Internet Explorer toolbar at the top of the window, select **Tools→Internet Options**.
3. In the Internet Options window, select the **General** tab. On the General tab, under **Browsing History**, click the **Settings** button.



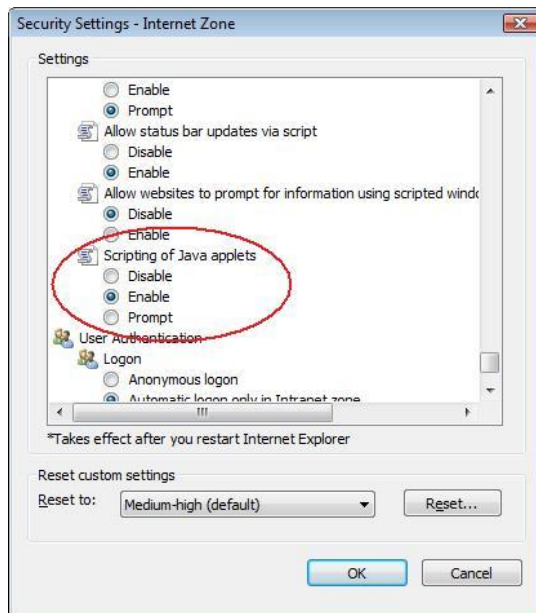
- In the Settings window that appears, make sure that **Check for Newer Versions of Stored Pages** is set to **Every Time I Visit the Webpage**.
- Click **OK** when finished.
- In the Internet Options window, select the **Privacy** tab. In the Settings area, make sure that the Privacy setting is set to **Medium**.



- Click on the **Security** Tab, then click the button labeled **Custom Level**.
- From the window that appears, scroll down until you find the heading labeled **Scripting** (it's almost all the way at the bottom). Find the entry labeled **Active Scripting** and set it to Enabled. Just below that, find the entry labeled **Allow Status Bar Updates via Script** and set it to Enabled. Don't click OK quite yet, there is one more setting to change.



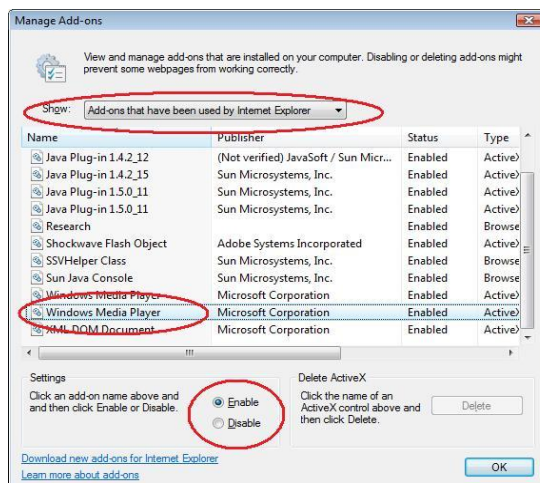
9. Scroll down slightly until you see the entry labeled **Scripting of Java Applets**. Set it to Enabled, and click **OK** when finished.



Enabling Active X

Windows Media Player Active X Controls Need to be enabled in Internet Explorer, otherwise a Javascript error may appear whenever the A+LS software attempts to play back a sound file during a lesson.

1. Click Tools → Manage Add-ons → Enable or Disable Add-ons. The Manage Add-ons window will appear.
2. Click the combo box labeled %Show: + and select one of the choices. Look through the list that appears in the window until you find Windows Media Player. You may have to click the combo box and select different choices until you see Windows Media Player appear in the window. Click on Windows Media Player when it appears. Enable it. Click OK when finished.



Installing the Flash Plug-in

Some instructions in A+LS use the Flash plug-in to deliver instructional content to the user. Go to <http://www.macromedia.com/software/flash/about/> to see if the Flash plug-in is currently installed on the computer's web browser and install it if needed.

Exempting Proxy Servers and Content Filters from A+LS

The school's Proxy Server must be set to *not* cache web pages coming from A+LS servers. Also, the school's Content Filter must not filter content coming from A+LS servers. Exempting the address www.aplusanywhere.com using port 80 should take care of this. In the event that you need specific IP addresses or other information about this, please contact AEC Customer Support using the information below.

If you have any questions about the procedures outlined above, please contact AEC Customer Support via email at support@amered.com or by calling 800-222-2811 Monday through Friday, 7am . 7pm Central Standard Time.